

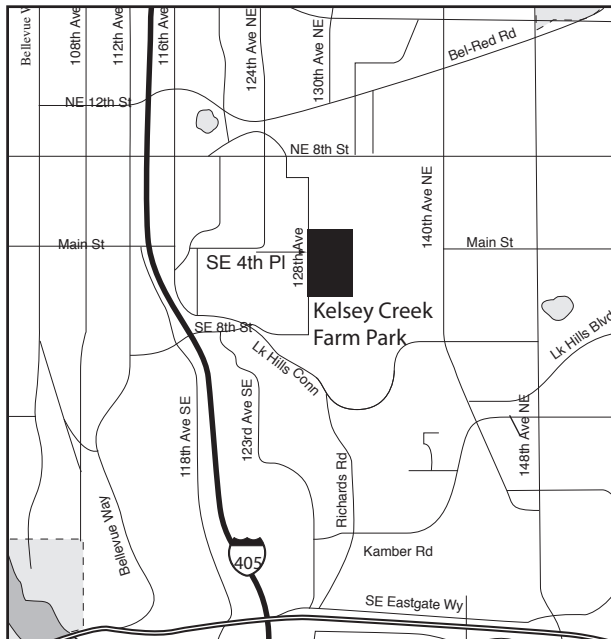
Driving Directions

Kelsey Creek Farm Park, 410 130th Pl SE, Bellevue

From 405:

- Take Exit 12 (SE 8th Street).
- Turn EAST at light (SE 8th Street) towards train trestle; go through next light; get into middle lane and follow road through light at Lake Hills Connector.
- Turn LEFT at stop sign (128th Ave SE).
- Turn RIGHT at SE 4th Pl.; Kelsey Creek Farm Park is straight ahead.

We are located just 5 minutes east of I-90 & 405 in the heart of Bellevue.



To register, please call 425-452-7688 or email KelseyCreekFarm@bellevuewa.gov or FarmerJayne@aol.com or www.FarmerJayne.com



This information will be provided in alternate format for individuals with disabilities upon request. We invite everyone's participation. Please provide two weeks advance notice for special needs requests. Assistance for the Deaf and Hard of Hearing can be provided through the 711 Telecommunications Relay Service.

A decorative border for the farm-themed flyer. It features a pink pig, a yellow duck, a red chicken, a yellow sheep, and a red barn. The border is set against a blue background with green grass and a yellow sky.

Farm Parties and Group Tours at Kelsey Creek Farm

Come explore, enjoy and learn from the rich environment of the farm. Whether attending a party, tour or classes the wonderful world of the farm awaits you.

City of Bellevue
Parks & Community Services

The logo for the City of Bellevue, Washington, featuring a stylized tree and the text "CITY OF BELLEVUE WASHINGTON".

Tours for Schools / Groups

Kids on the Farm

Explore our farm — hands-on fun as you meet our goats, ponies, sheep, pig and rabbits and tour the barn, full of local history. Learn interesting animal facts then move inside to experience the old-fashioned skill of wool carding. Children create fuzzy sheep to take home. Available June to September and December to April. Ages 2 and up.

Fall at the Farm

Experience the harvest season in a traditional way. Visit our pony and pig, feed the chickens and work on barn chores with child-size pails and rakes. Tour the garden and pumpkin patch. Children finish up in our harvest-themed mud-free, indoor pumpkin patch. Enjoy your day in a non-commercial, relaxing atmosphere. Available October only. Ages 2 and up. Additional pumpkin fee.

Pioneer Day at the Log Cabin

Visit our log cabin and imagine life in the 1890's. Storytelling and active play let children experience how pioneers lived without our modern conveniences. Children participate in activity stations learning to grind wheat, churn butter, knead dough, create a fabric and paper quilt, play dress-up, card wool, pump water and other living history skills. Available November only. Ages 3 and up.

Springtime in the Barnyard

Welcome springtime with a tour of our newest animals, which may include chicks, goat kids, and calf. Learn about their special care then finish up in the garden planting pumpkin seeds. Available May only. Minimum age 2 and up, strictly adhered to.

Tour Cost

\$5 per child - \$2.50 per adult - staff free - \$75 minimum per tour
Minimum cost for groups with less than 15 children is \$75. Tours are 1 hour long and available most weekdays.

Farm Parties

Celebrate your child's special day with a visit to the farm. Meet our goats, sheep, pigs, rabbits and ponies and visit inside our historic animal barn. Create your own woolly sheep to take home. Party package includes one hour tour/craft time and one hour classroom rental in the Education Barn. Available year round, ages 2 and up. Call early for reservations. Parties designed for groups with up to 30 children and adults combined. \$140 for Bellevue residents. \$150 for nonresidents.

